

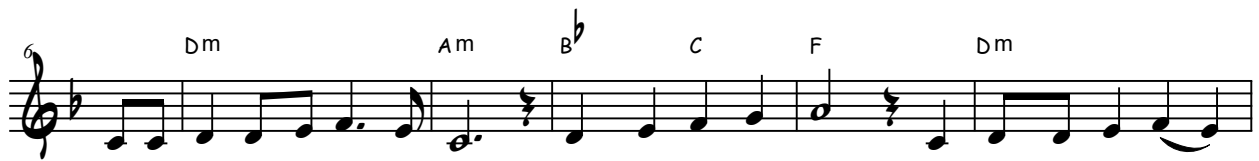
4th Sunday of Lent (Year B)

Psalm 136

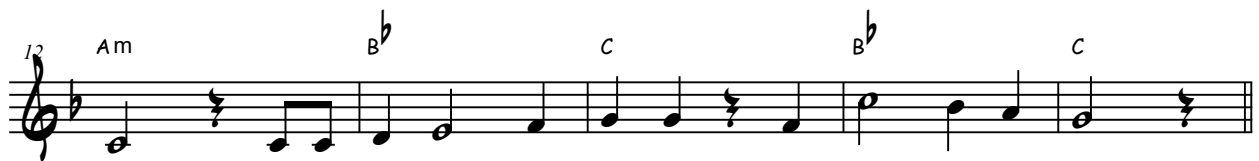
Evelyn Lee



Response: O let my tongue cleave to my mouth if I re-mem-ber you not!



Verse 1: By the ri-vers of Ba - by - lon there we sat and wept, re - mem-ber-ing Zi -



on; on the pop-lars that grew there we hung up our harps.



Verse 2: For it was there that they asked us, our cap-tors, for songs, our op-



pres-sors, for joy. 'Sing to us,' they said, 'one of Zi - on's songs.'

28 Dm C B^b C F

Verse 3: O how could we sing the song of the Lord on a - li - en soil? If I for-

33 Dm C B^b C

get you, Je - ru - sa - lem, let my right hand wi - ther!

37 Dm F/C B^b C

Verse 4: O let my tongue cleave to my mouth if I re - mem - ber you

41 F Dm C F B^b C

not, if I prize not, Je - ru - sa - lem a - bove all my joys!